

GO TipTilt Stage

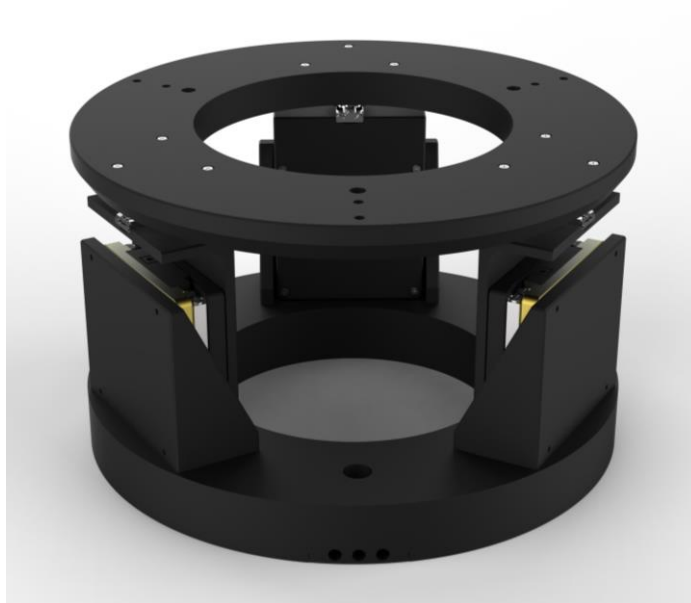
Precise & Powerful

Motion of One Plane

Nanometer Resolution Alignment of One Plane

The PRECIBEO GO TipTilt Stage is based on the precise and powerful GO Stages, which makes the GO TipTiltStage lift up to 2,5 kg and be self-locking at rest.

The PRECIBEO GO TipTilt Stage is easily controlled through the GO Controller and the GO Motion Windows App. C++ DLLs are available for easy programmatic integration.



Technical Specification

MODEL	GO TIPTILT STAGE – 15 N	GO TIPTILT STAGE – 30 N
POSITIONING		
TRAVEL (Z)	+/-10 mm	
TRAVEL $\Theta(X, Y)$	+/-9°	
MIN INCREMENTAL MOTION (Z)	2 nm	
MIN INCREMENTAL MOTION $\Theta(X, Y)$	< 0,1 μ rad	
REPEATABILITY (Z)	+/- 200 nm	
REPEATABILITY $\Theta(X, Y)$	+/- 15 μ rad	
MOTION		
MAX OPERATING FORCE (PUSH / PULL)	(Z) 15 N (MIN.)	(Z) 30 N
HOLDING FORCE (WHEN POWER IS OFF)	(Z) 18 N (MIN.)	(Z) 33 N
MAX SPEED AT NO LOAD (Z)	8 mm/s	8 mm/s
MAX Z SPEED WITH MAX LOAD ON TOP	> 5 mm/s	> 1 mm/s
DRIVE TYPE		
TIPTILT STAGE BASE MODULE	PRECIBEO GO Linear Stage LS4545	
MECHANICAL		
MAX LOAD CENTERED ON TOP PLATE	1 kg	2,5 kg
DIAMETER	150 mm	
HEIGHT	92 mm	
MISCELLANEOUS		
CABLE FROM EACH OF THE 3 GO STAGES	2 m cable (+/-5%) with ix Industrial™ connector	
MATERIAL	Aluminum	

Order Information

Please contact us by phone (+46 18 700 13 40) or email (sales@precibeo.com) for any enquiries.

PRODUCT	DESCRIPTION
GO-TIPTILT-15N/30N	One GO TipTiltStage with Cables and Connectors.

Disclaimer: Specifications of the product do not constitute a warranty of the properties. They are intended for information purposes only and are subject to change.