

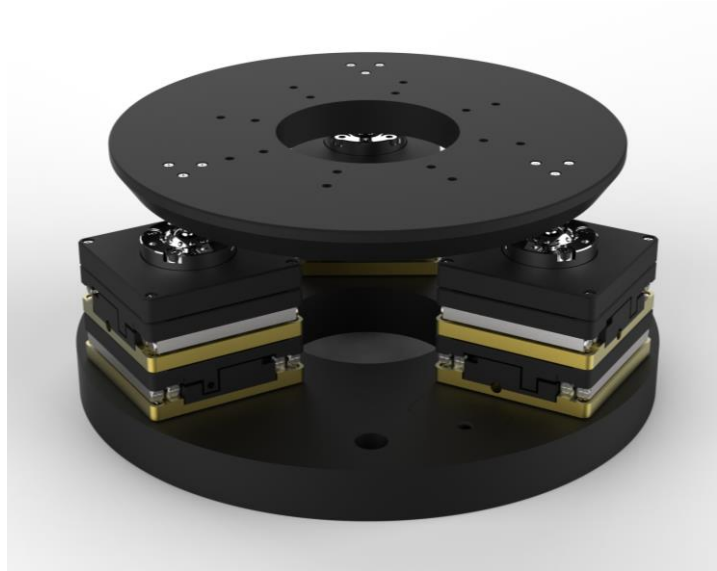
GO XYR Stage

Precise 3-Axis Motion in One Plane

Nanometer Resolution Motion in One Plane

The PRECIBEO GO XYR Stage is based on the precise and powerful GO Linear Stages, with smooth continuous motion and that are self-locking at rest.

The PRECIBEO GO XYR Stage is easily controlled through the GO Controller and the GO HexMotion Windows App. C++ DLLs are available for easy programmatic integration.



Technical Specification

MODEL	GO XYR STAGE – 8 N	GO XYR STAGE – 16 N
POSITIONING		
TRAVEL (X, Y)	+/-10 mm	
TRAVEL Θ (Z)	+/-10°	
MIN INCREMENTAL MOTION (X, Y)	2 nm	
MIN INCREMENTAL MOTION Θ (Z)	< 0,1 μ rad	
REPEATABILITY (X, Y)	+/- 200 nm	
REPEATABILITY Θ (Z)	+/- 15 μ rad	
MOTION		
MAX OPERATING FORCE (PUSH / PULL)	(X) 10 N / (Y) 8 N	(X) 20 N / (Y) 16 N
HOLDING FORCE (WHEN POWER IS OFF)	(X) 12 N / (Y) 10 N	(X) 24 N / (Y) 20 N
MAX SPEED AT NO LOAD (X, Y)	8 mm/s	8 mm/s
MAX SPEED AT MAX PUSH/PULL FORCE	> 5 mm/s	> 1 mm/s
DRIVE TYPE		
HEXSTAGE BASE MODULE	PRECIBEO GO Linear Stage LS4545	
MECHANICAL		
MAX LOAD CENTERED ON TOP PLATE	10 kg	10 kg
DIAMETER	165 mm	
HEIGHT	73,5 mm	
MISCELLANEOUS		
CABLE FROM EACH OF THE 3 GO STAGES	2 m cable (+/-5%) with ix Industrial™ connector	
MATERIAL	Anodized Aluminum	

Order Information

Please contact us by phone (+46 18 700 13 40) or email (sales@precibeo.com) for any enquiries.

PRODUCT	DESCRIPTION
GO-XYR-8N/16N	One GO XYR Stage with Cables and Connectors.

Disclaimer: Specifications of the product do not constitute a warranty of the properties. They are intended for information purposes only and are subject to change.